

Weekly Bulletin

Week ending Friday 11 March 2022

PE reminders for next week

Upcoming fixtures:

- **Monday 14th March: Girls' Football** – Houlton vs Bilton (at Houlton – pick up time 4:45pm). Team sheet is already on the PE notice board.
- **Tuesday 15th March: Boys' Rugby fixture.** Team sheet will be on the PE notice board and information will be sent home regarding pick up time via Mr Williams. Pupils will need their full Houlton PE kit, football boots and preferably shin pads if they already have them.
- **Wednesday 16th March: Girls' Football** – Houlton vs RFSS (at Houlton – pick up time 4:45pm). Team sheet is already on the PE notice board.

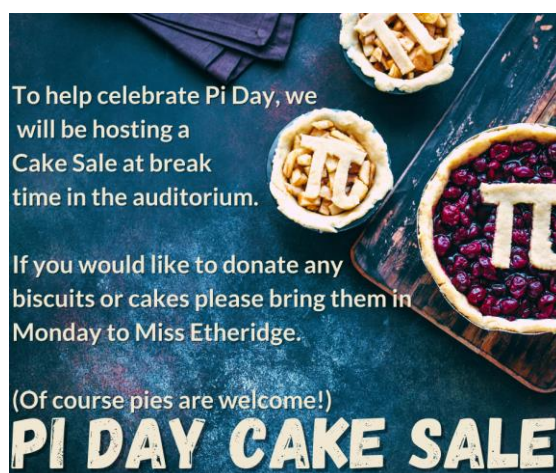
Pi Day

On Monday 14th March Houlton School will celebrate Pi day with competitions and sweet treats, as well as teaching our pupils about this very special number.

Some of the competitions to look forward to are:

- Can you put the teachers in the correct order for Pi?
- How many digits of Pi can you name?
- Who has the best maths joke?

There will also be a cake sale at break time. If you would like to contribute any items, please send them in to Miss Etheridge on Monday. Of course, any pies will be very welcome!



Pupil Absence

Please remember to either telephone through your child's absence, leave a voicemail message on the absence line or email hello@houltonschool.org.uk by no later than 8:30am on each morning that your child is absent.

Please note that we do not operate a 48-hour sickness policy. If your child is feeling well and no longer showing symptoms they are able to attend school.

Support your local community: Become a school governor

The Transforming Lives Educational Trust (TLET) is currently seeking volunteers to join its governing bodies.

Why should I become a governor?

Alongside our dedicated and talented staff, our passionate and committed governors (known as AIM Partners) have a vital role to play in managing our schools.

From acting as a critical friend to Principals and leadership teams, to developing strategies to ensure our schools run as effectively as possible – as an AIM Partner, your contribution could make a real difference to the lives of local children.

Becoming an AIM Partner also provides an opportunity to learn about how a school is managed, to see first-hand how your efforts help raise standards, and develop new skills along the way.

I am not an education expert, how can I contribute?

AIM Partners are not expected to be education experts, on the contrary, it is the diverse knowledge and experience of our AIM Partners that enables us to bring out the best in our schools and develop long term plans to provide the best possible education for every child.

We welcome volunteers from a range of backgrounds and with a wealth of expertise to join our AIM Partner team. Perhaps you have a background in finance, law or IT, or a specialism in HR, management or another discipline that provides valuable transferable skills. Ultimately, however, we are seeking volunteers from all backgrounds, who want to contribute to our school communities.

You may also be the parent or carer of a current or former pupil, which also brings an incredibly important perspective.



Ashlawn
School



Houlton
School

How can I find out more? If you would like to find out more about becoming an AIM Partner, please contact us for an initial discussion:

Tel: 01788 593900 | Email: info@tlet.org.uk | www.tlet.org.uk