



Houlton School
Signal Drive, Houlton,
Rugby, Warwickshire, CV23 1ED

01788 593300
hello@houlton.tlet.org.uk
houltonschool.org.uk

Michael McCulley
Principal

Registered in England
Company number 07515832

June 2025

Dear Parent/Carer,

I am writing to you to thank you for your support in ensuring that our pupils come to school in a safe, focused and happy environment.

Our school uniform expectations are an integral part of our standards at Houlton School; we expect all pupils to maintain them each day. By upholding the uniform non-negotiables around the school site, we are engaging with our young people to show them that even the smallest of behaviours will be noticed and addressed. Our belief is that this vigilance will result in even more positive behaviours school-wide, allowing our entire school community, and your child, to thrive.

For this reason, we are putting our focus back on to uniform during our final half term. We understand that over the course of a busy morning, it may be difficult to check each individual aspect of your child's uniform before they leave the house. To support you and your child with this, we have created an at-a-glance guide for you. We hope that this will be helpful in allowing for a quick uniform check in the morning, thereby avoiding any uncertainty or unwanted consequences at school (as set out in our Positive Behaviour Policy). This same document will be provided to our staff, so that your child can be confident that they will be working from the same set of standards; ensuring clarity for all. Four key areas of focus will be: **hoodies, jewellery, phones and make-up**. Where these are found onsite, they will be confiscated and left at reception for parents to collect. To avoid this inconvenience for you, please encourage your child to remove these items before coming to school and hand in their mobile phone to their tutor each morning.

Through working together, we have no doubt that we can build more positivity into all of our interactions at Houlton. We want nothing more than to see our pupils flourish and, with your help, we know that we can achieve this.

Yours faithfully,

Mrs. S. Warde.
Assistant Principal for Behaviour, Attendance and Restorative Practice.

Houlton School uniform at-a-glance:

Shirts and ties:

Shirts are fully buttoned, with a school tie at the collar. Pupils keep their shirts tucked in throughout the day.



School shoes:

Plain black school shoes are worn. Trainers or trainer-style shoes are not permitted.

Blazers and lanyards:

Blazers and lanyards are worn on the school site, at all times.



Jewellery, hair, make-up and nails:

Facial jewellery is a single plain stud in each ear lobe. All other jewellery is not permitted.

All thin strands of hair (including thin braids) are tied up.

Nails are kept bare (with no polish, gel or acrylics).

Light, natural make-up can be worn to cover blemishes.

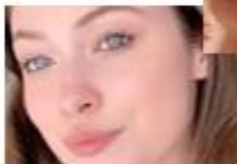
Shorts and skirts:

Shorts and skirts are worn on the hips and the hem hits the knee. At no point are skirts to be rolled up.

Piercings: A plain stud in the lobe, that will move with the ear if hit, rather than digging in.



Make-up: Soft, natural-looking make-up that covers blemishes is permitted. For support and tutorials, run an internet search for 'no-foundation make-up'.



Shoes: Sturdy, supportive shoes that are comfortable enough to keep feet healthy when used five days a week.



Headwear and outerwear: Hijabs in colours that complement the school uniform (such as grey, white or black).

Sun hats during the summer and woolly hats during the winter, for wearing outside.

Warm coats that are rain-proof (rather than hoodies which soak through easily), for wearing outside.



Bags: Bags that are big enough for schoolbooks, lunches and spread the load evenly for your child.



Hair: Hair that is tied up.



Not permitted:

Piercings: Hoops and all other piercings of the face and body. Pupils participate in many activities each day; other jewellery is not considered safe in school as they could be more easily caught, pulled or struck and cause harm to our pupils.



Make-up: Fashion make-up, including bronzer, highlighter, lip-liner, false-eyelashes, lipstick, fake nails, nail varnish and lip-gloss, heavy foundation, concealer that does not match skin-tone. This is not safe or appropriate for a school environment, for example posing a hazard as a potential foreign object when preparing meals in Food Tech.



Shoes: Casual shoes and heels, which may not provide the necessary support for growing feet or be too heavy for growing joints 5 days a week.



Bags: Bags that put unnecessary strain on backs and necks when they are full. You want to protect your joints and muscles by spreading the load evenly.



Headwear and outerwear: Fashion head and outerwear (e.g. hoodies) that do not properly protect from the sun, rain or cold.



Hair: Hair that can dangle down into the path of food, Bunsen burners or sanding equipment.

