



Houlton School
Signal Drive, Houlton,
RUGBY, Warwickshire, CV23 1ED

01788 593 300
hello@houltonschool.org.uk
houltonschool.org.uk

Michael McCulley
Principal

Registered in England
Company number 07515832

15 December 2023

Dear Parents/Carers

Year 9 Attainment and Progress Report One

Your child's first of their two Year 9 Attainment and Progress Reports is now available via Edulink (under Documents). This report allows you to see pupils' progress so far in Year 9. They will have a further report later this academic year, which will be followed by Parents' Evening.

Target Knowledge Grades:

On entry to Houlton, your child sat a number of standardised assessments which assessed your child's cognitive potential. We have used these scores to group pupils into one of four Target Knowledge Levels:

Complex
Developmental
Core
Foundational

Current Knowledge Grades:

These grades have been calculated based on your child's performance in a range of class assessments that are synoptic* in nature.

**This means pupils are tested on what they have been taught last week, last term and last year, so we can gauge how much they can remember and do from our whole Key Stage 3 Curriculum to date.*

Complex
Developmental
Core
Foundational

Progress Indicators:

We provide these for information at this stage; they are based on the current ways in which your child is working at Key Stage 3. Pupils follow the National Curriculum, enhanced by our LORIC and PiXL Edge Character curricula. See the bottom of the report itself for a full description, but the levels are:

Exceeding Expected Progress (EEP)
Expected Progress (EP)
Working Towards Expected Progress (WTEP)
Significantly Below Expected Progress (SBEP)



Attitudes to Learning:

These are expressed in four levels and a full description can be found at the bottom of the report itself:

World Class

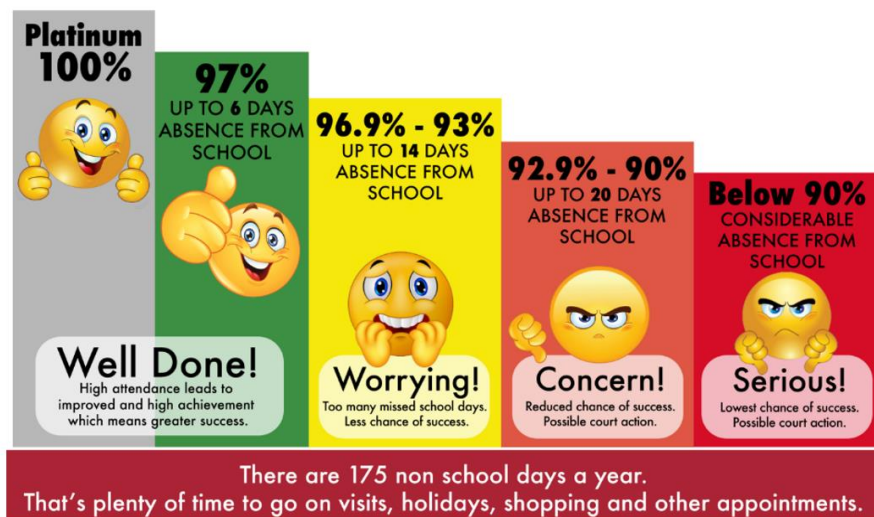
Good

Requires Attention

Significant Concern

Attendance:

Attendance percentages can be deceiving. For example, were one to achieve 90% in an examination, this would likely feel like a great result. However, a pupil with attendance below 90% is officially 'persistently absent' as attendance of 90% equates to an average of one school day missed per fortnight. Attendance of 80% equates to an average on one day missed per week. Therefore, attendance at school is extremely important if pupils are to achieve their full potential, as for every school year a child's attendance is below 90% research has shown that they are likely to achieve half-a-GCSE-grade lower in Year 11.



Support and Contacts:

Ms Lancini, Assistant Principal with responsibility for assessment and data, has made an online video which explains how to interpret your child's report. This is available at:

https://www.youtube.com/watch?v=ph_TmlkHfnw

If, after watching this support video, you have any queries in relation to your child's report then please contact Ms A Lancini (Assistant Principal – lancinia@houltonschool.org.uk) or Miss A Smith (Data Manager – smitha@houltonschool.org.uk) and we will respond within two working days.

Yours faithfully

Michael McCulley
Principal